

Schaltbild • Circuit diagramm • Schema du poste • Esquema del aparato

D Weitere Dokumentationen:

Ersatzteilliste	3 D93 340 010
Abgleichanweisung	3 D92 440 016

F Documentation complémentaire:

Liste de rechanges	3 D93 340 010
Instructions d'alignement	3 D92 440 016

Supplementary documentation:

Spare part list	3 D93 340 010
Alignment instructions	3 D92 440 016

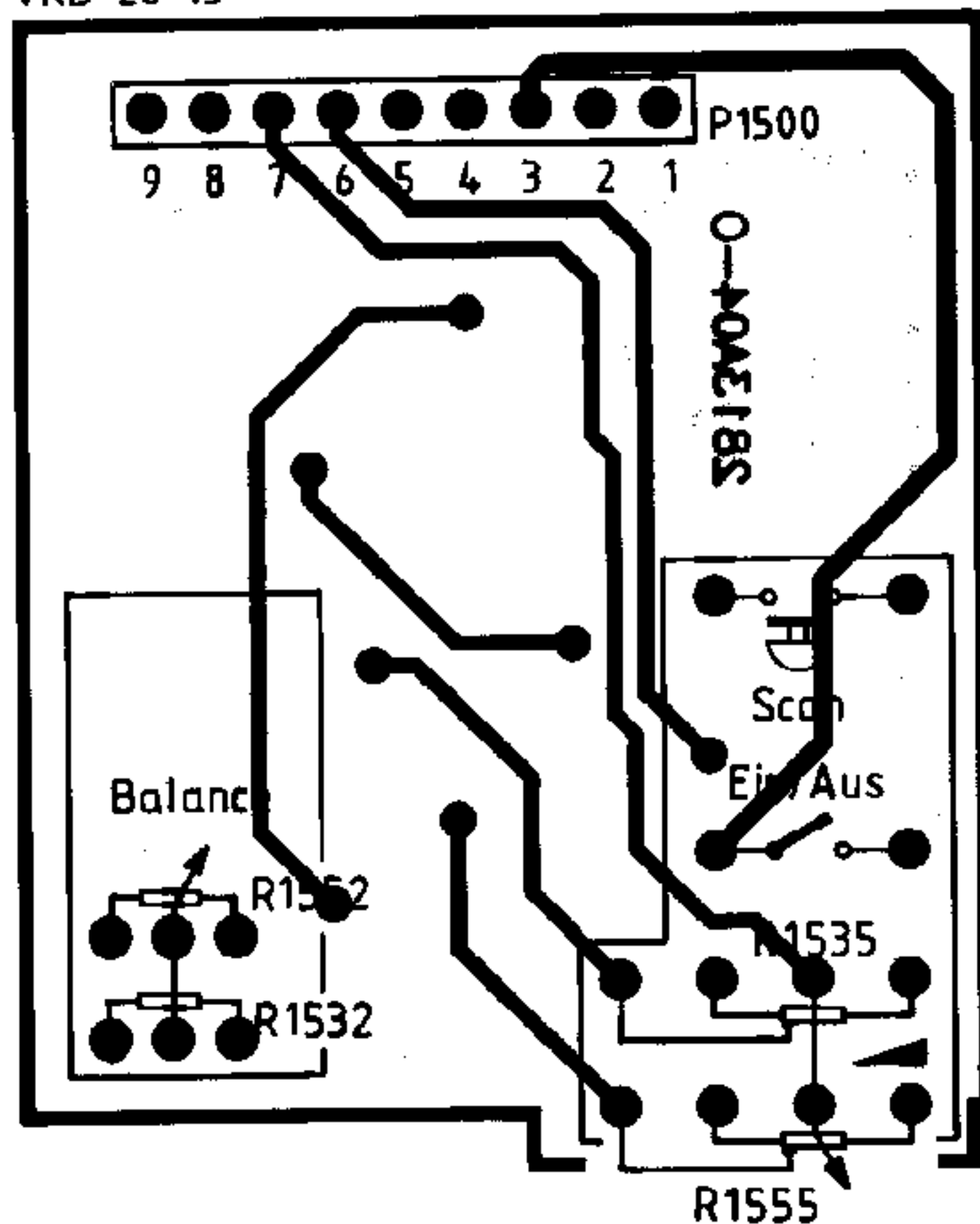
(E) Documentación suplementaria:

Lista de repuestos	3 D93 340 010
Instrucciones de calibrado	3 D92 440 016

Connector - Board

PL 74

VKD 28 13



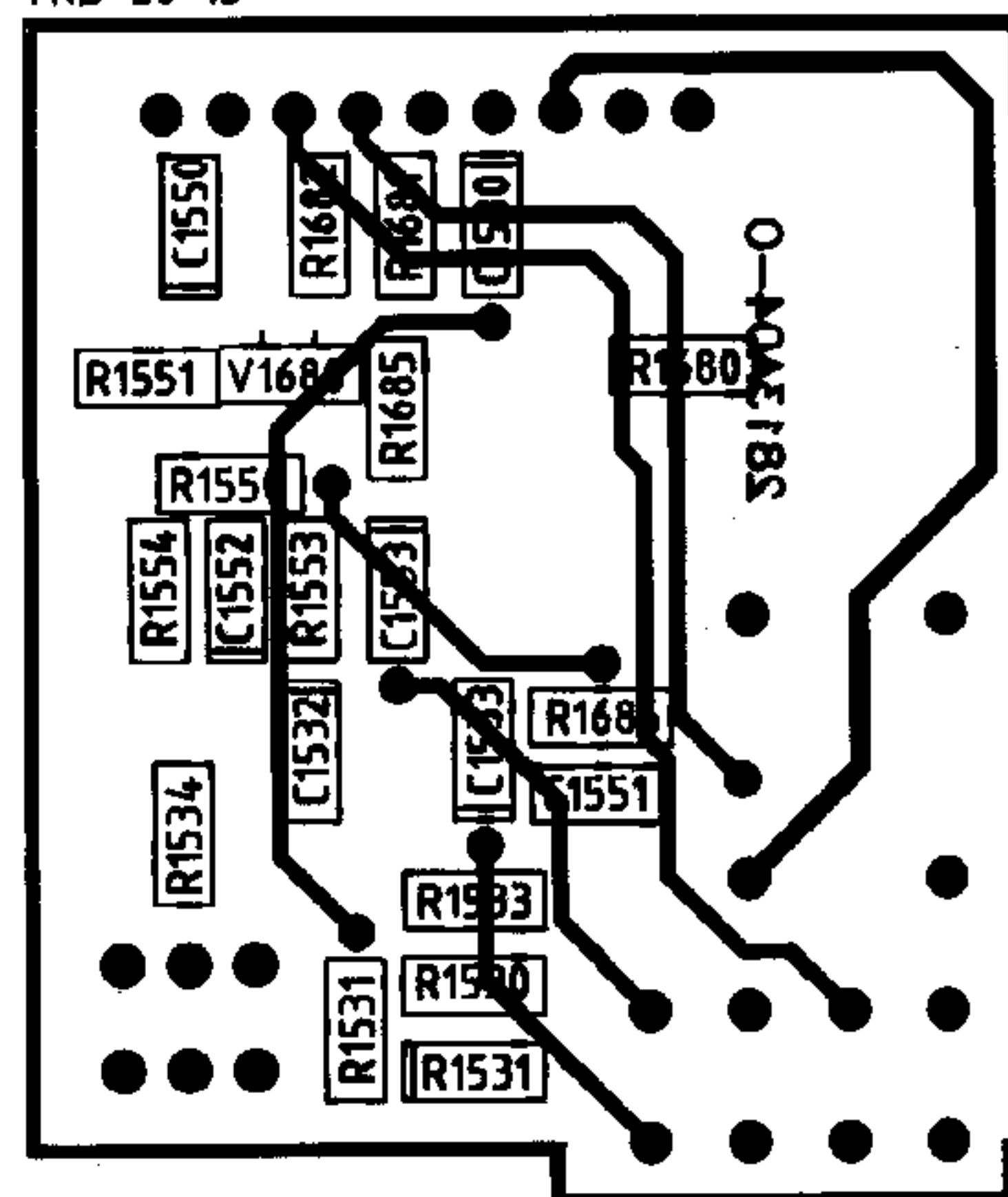
R1555

VKD 28 14

P/N1500

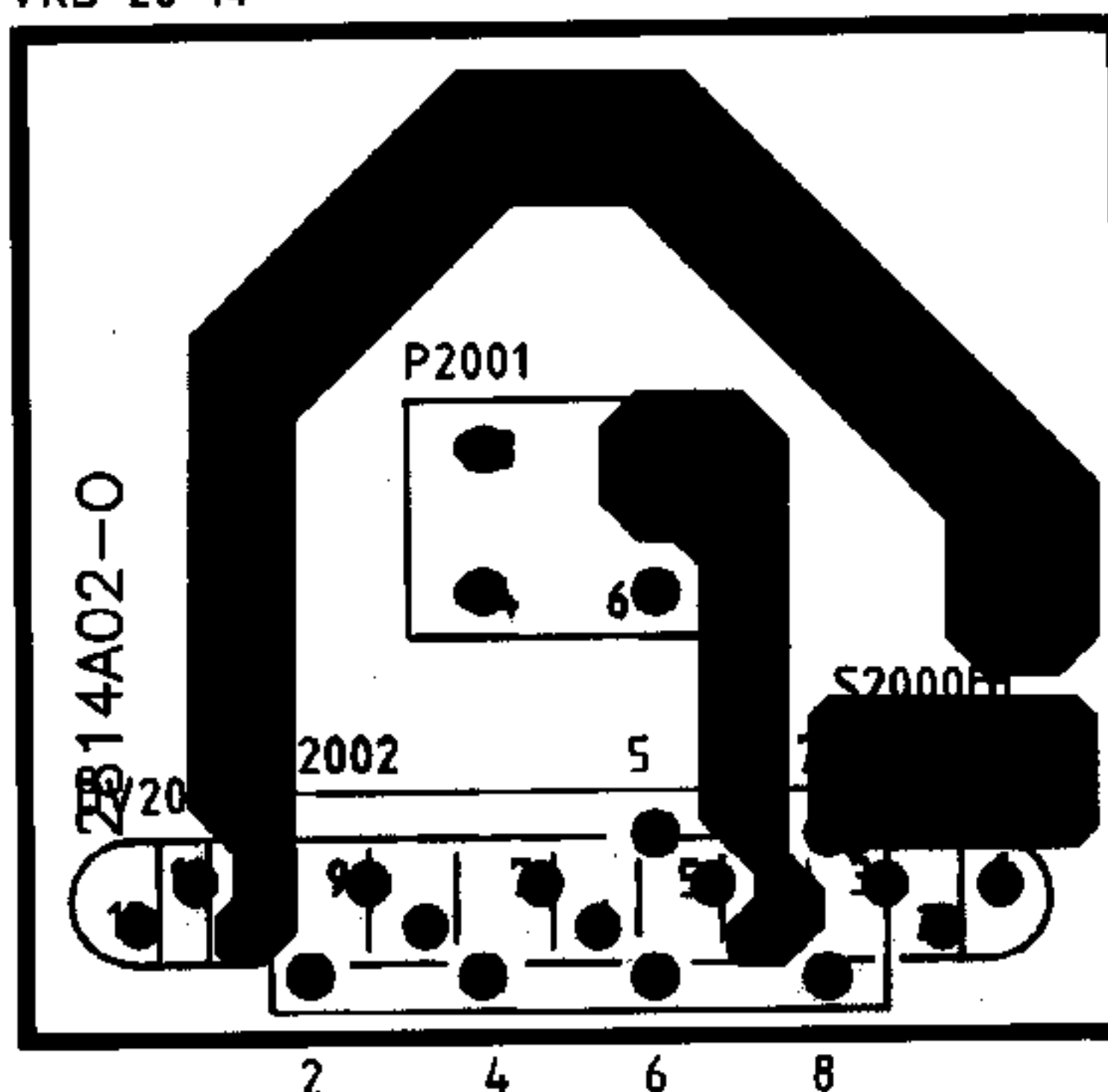
- 1 = Scan
- 2 = U141
- 3 = Ein/Aus
- 4 = L-IN
- 5 = Fußpunkt
- 6 = L-OUT
- 7 = R-OUT
- 8 = Masse
- 9 = R-IN

VKD 28 13



DV2000

1 = } Masse
 2 = }
 3 = }
 4 = LF+
 5 =  12V
 6 = U Bel.
 7 = U-Zünd.
 8 = Masse
 9 = R+
 10 = U Dauer
 11 = Tel.-Mute
 12 = N.C.



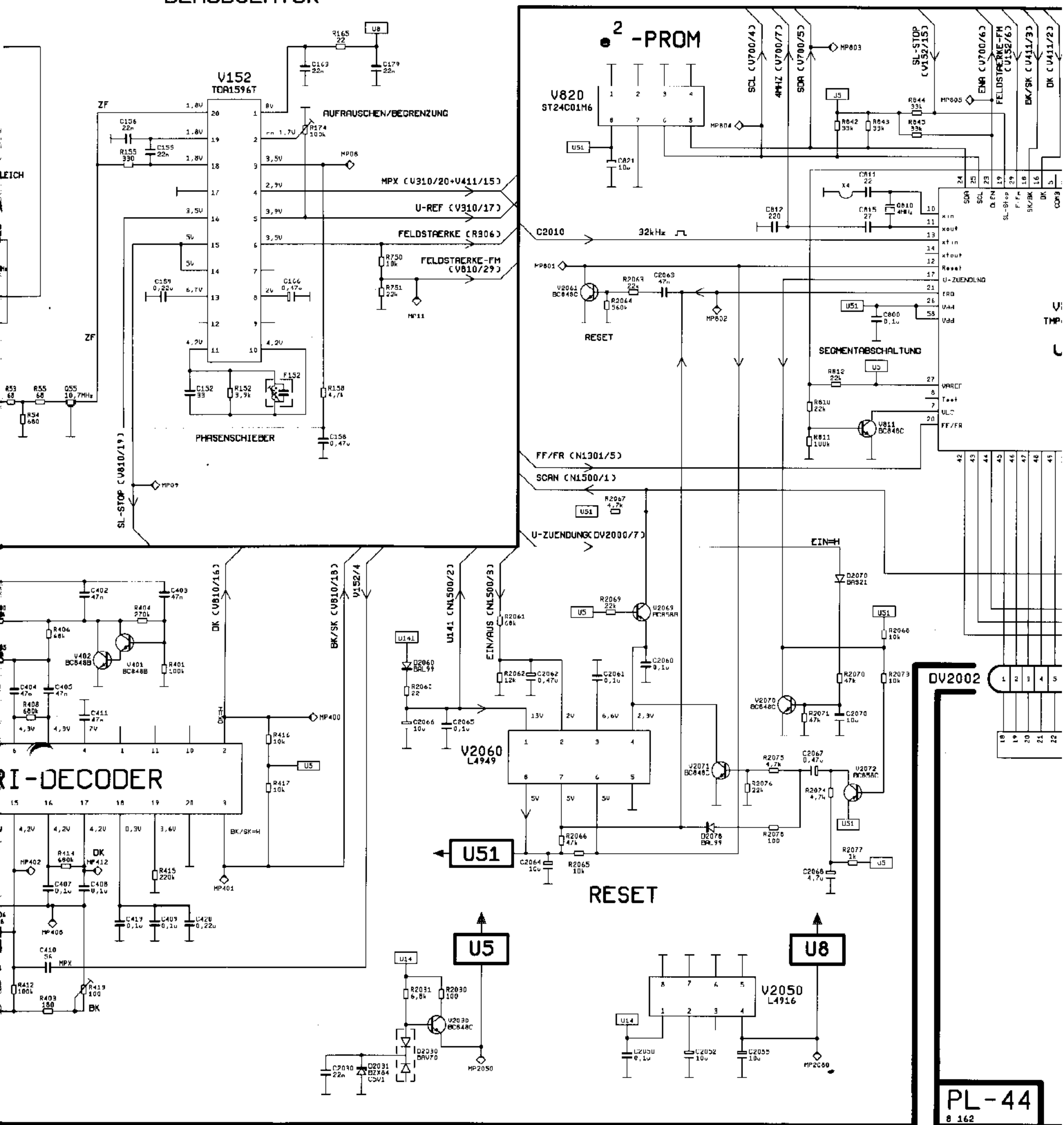
P2001

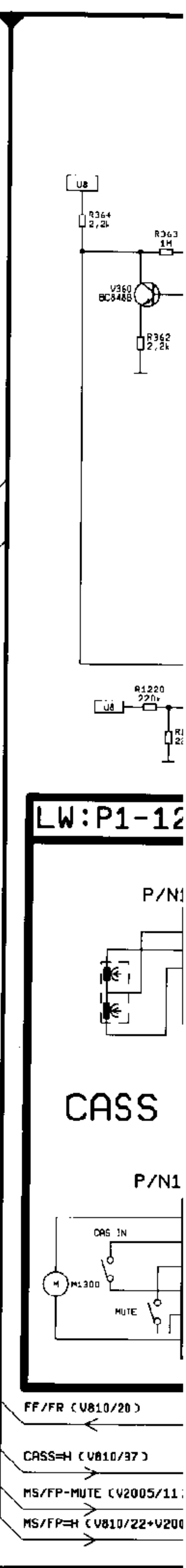
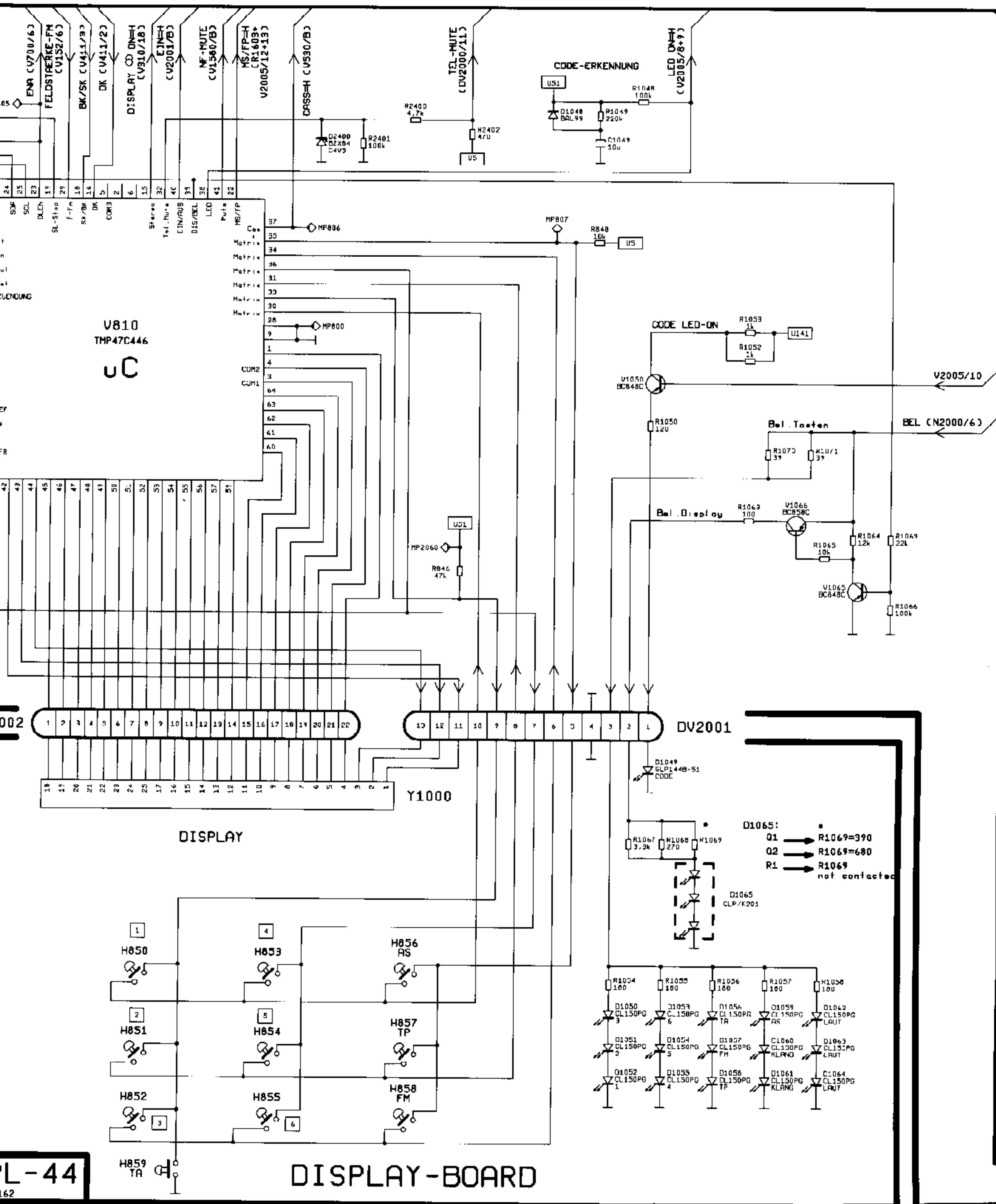
3 = R - +
4 = R - -
5 = L - +
6 = L - -

P2002

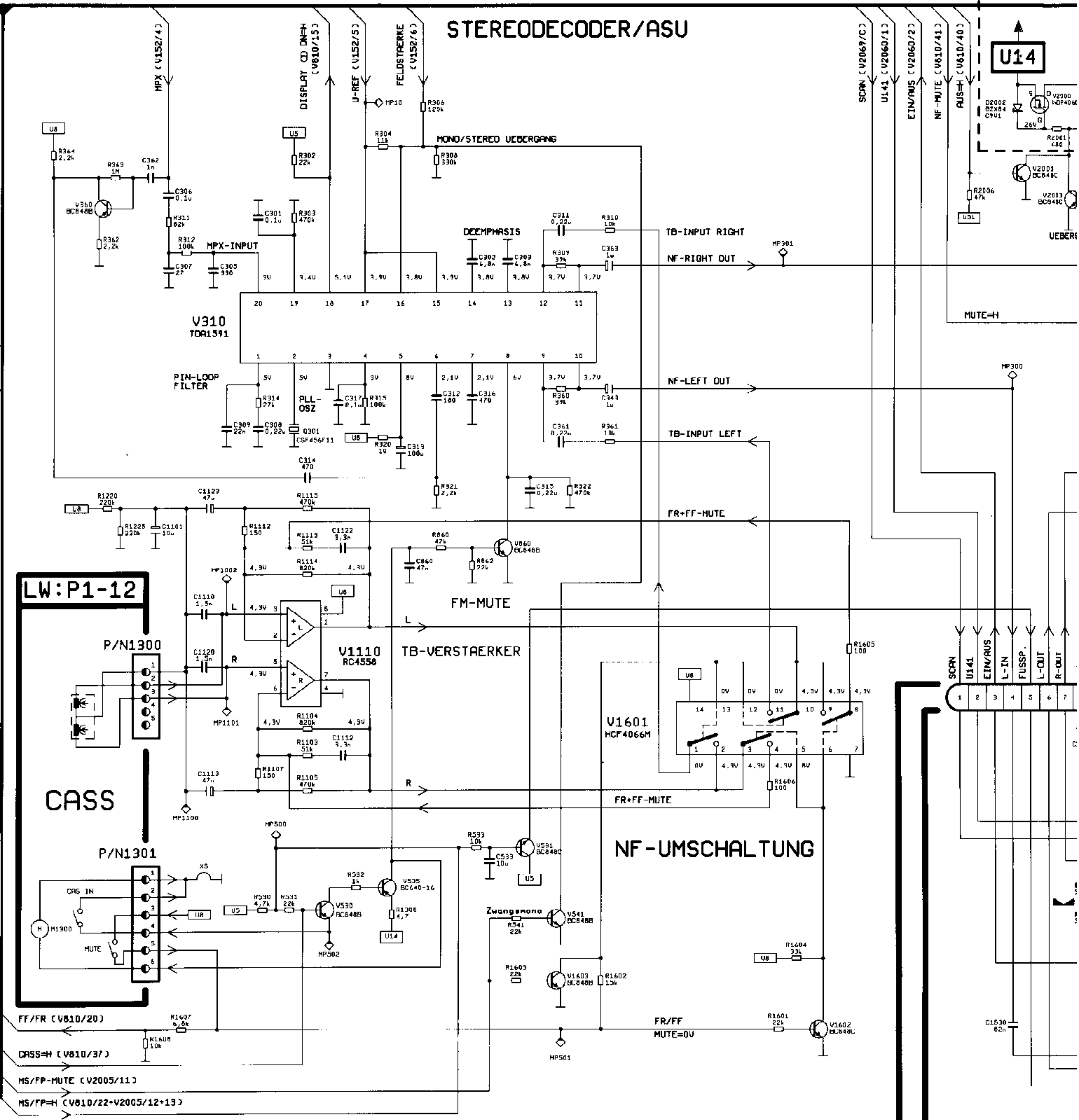
2 = Tel.-Mute
4 = U-Zünd.
5 = 
6 = U-Bel.
7 = U Dauer
8 = Masse

DEMODULATOR





MONO/STEREO UEBERGANG



ELEKTRONISCHES RELAIS

